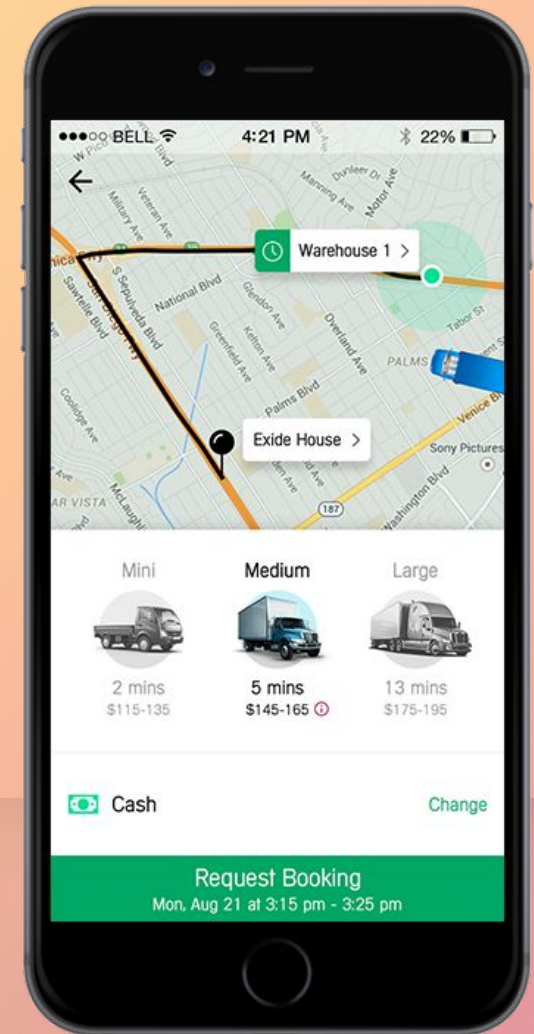




Digital Touch for your Fleet Management Business

A complete solution to your Fleet
Management System!



Introduction

In today's world with the advent of higher level of technology and communication systems, keeping a track on movable assets is very convenient. This development can be very helpful in developing a Fleet Management App which –

- Can help you monitor all your vehicles in fleet anytime, anywhere.
- Can provide you a full visibility of the routes followed by your vehicles and their status, including fuel level!
- Can provide you the security of fleet, efficiency in operations and reduction in costs.

But before that...

Let's quickly validate your
Fleet Management App
IDEA.



Is Your Current Fleet Management Process Ensuring Profit?

Many agencies offer fleet management services. But instead of sharing your profit with them, it is good to have your own app.

Vehicle route tracking, driving pattern monitoring, fuel meter updates – there are many more things which the app can do.

Profit is the ultimate vision of every business. There are transports and logistics seeking your assistance in their fleet management system.

With millions of commercial vehicles trailing the road everyday, can't a fleet management app ensure profit?

Estimated and Projected Value of Fleet Management Industry



Source: www.marketsandmarkets.com

How You Are Going To Monetise The App?

The market is now flooded with numerous fleet management service providers. Your major USP should be the uniqueness of the features you will provide in your app.

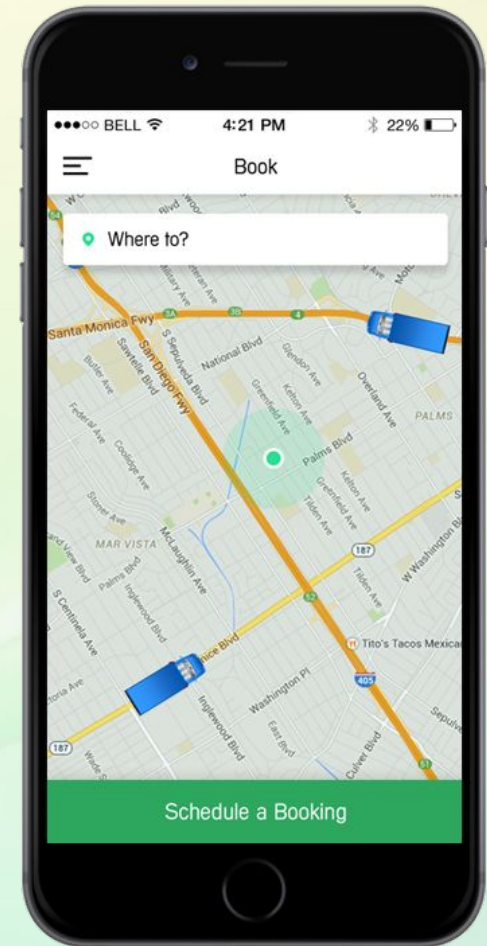
Features like in-app purchases, advertisements from companies closely associated with your business can generate good revenue for you. Your app can also generate leads for affiliate marketers and make you earn from it.


In today's era, where a smartphone is every person's need, you can easily monetise by being unique.

Roll on to know more!

Who Can Get Benefitted From Your Fleet Management App

- ✓ Commercial Transport Agencies
- ✓ Logistics Management Agencies
- ✓ Owners of 5-500 Vehicles Fleet
- ✓ Fleet Managers
- ✓ Local Public Transport Agencies



A close-up photograph of a person's hand pointing their index finger at a specific location on a printed map. The map shows various streets and landmarks, with the finger pointing to a spot near a blue line representing a road or river. The background is blurred, showing some bokeh light effects.

Here's The Roadmap To Build A Fleet Management App...

allrideapps.com



01

**Focus on
design, dashboard
navigation and
architecture of app**



Why design, dashboard navigation and architecture of app important?

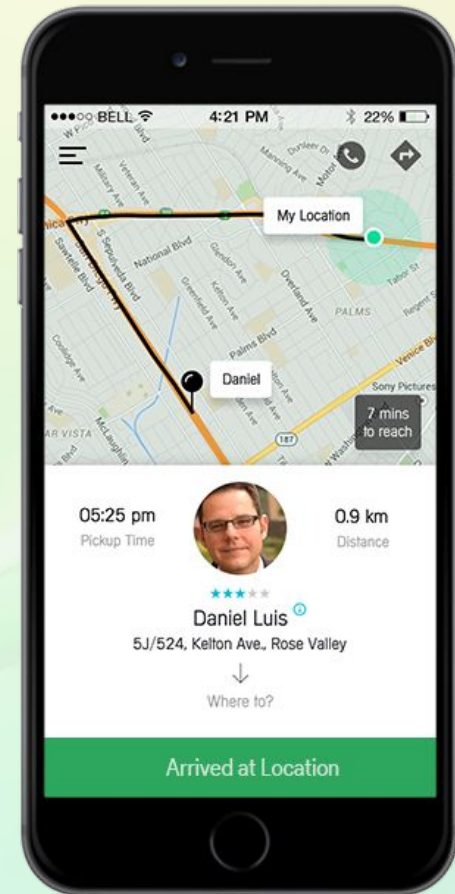
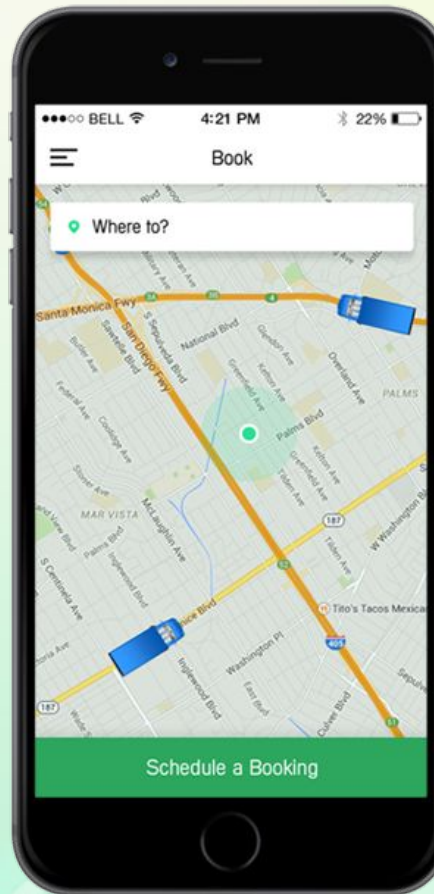
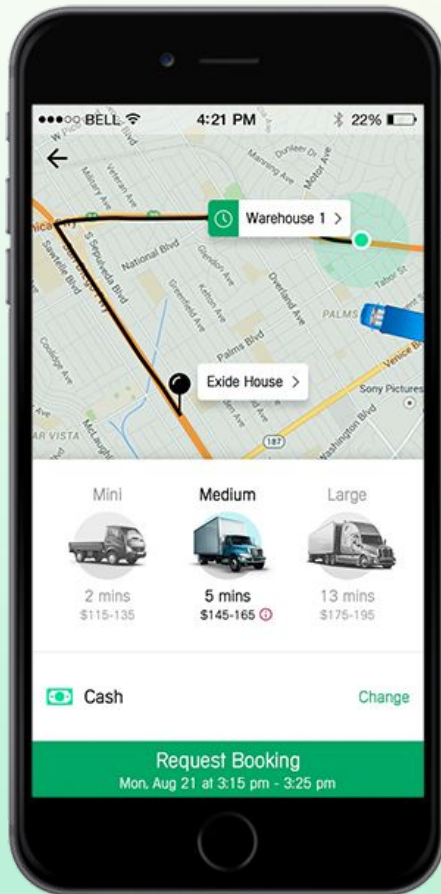
Design and Dashboard Navigation are important as both fleet owner or manager and the driver needs to access the app. A complicated design or complex navigation system might not serve their purpose well.

A nice app architecture means your app is well structured without any functional errors. A simple design with great architecture is what makes an app ideal.

What we do at AllRide?

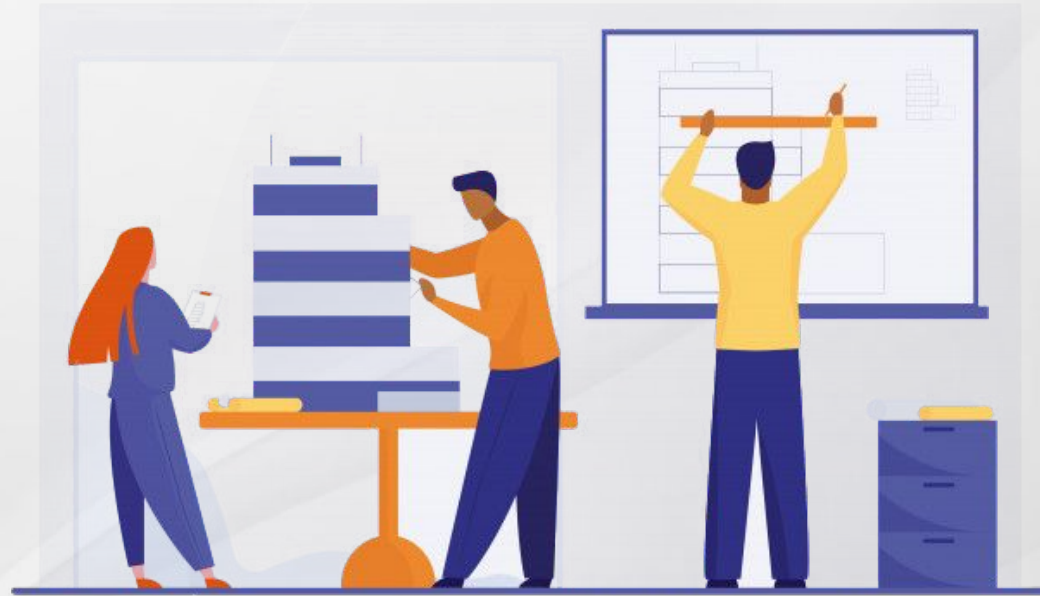
We invest our specialisations in app development in the process of enabling businesses to maximise their ROI. We offer highly adaptable and scalable models of IT implementation in business processes for its greater efficiency and returns.

Few Important Screens



02

**“Accurate
monitoring
is the key” –
Proceed with
this vision**



Why accurate monitoring is important?

A fleet owner must know about the revenues earned by his vehicles. A fleet manager must know about the location and status of vehicles on road. Customers should know about the ETA of their orders.

None of the above is possible without accurate monitoring system. Your app must be homing all the technical specialities to enable accurate position of vehicles, accurate level of fuel, driving pattern of driver and route details.

Well, we can help you with more features in your app?

How AllRide makes Transport and Delivery Easy?

Allride takes unique and innovative approach in helping fleet owners and managers to solve the issues and challenges they face regularly. We provide smart, AI-driven, high performing and ready-to-go base solution focusing towards saving the time and money of fleet owners and managers.

If your fleet is of cabs, buses or bikes, or if you are in delivery or logistics business, we have a solution for you to make your operations smooth, easy and economical. To scale your fleet management business within your reach and ward off accidental or uncertain worries, you must rely upon technology, which AllRide can craft for you with ease.

**Have a clear
format of report
generation and
information
sharing**



How important is report generation and information sharing?

It is the reports which figures out how effective the fleet management had been in a certain period of time. Be it daily, weekly, fortnightly or monthly, fleet owners have to access study reports related to vehicle performance, physical and registration status of vehicle and driver efficiency frequently.

These reports and information helps them to structure and shape their business effectively. Your app must be able to generate field-wise real-time reports which can allow fleet owners to learn as how much benefit they got from your app.

What we do at AllRide?

We use cross platform app frameworks like React Native and Ionic which provides default UI elements to develop easily understandable reports. Tables, tabs, action sheets, filters and forms are few of the most useful tools which can provide accurate real-time report to the app users.

Our app development process focuses on information sharing methods in both in-app and off-app modes. We also ensure real-time data security by implementing high end encryption and server security measures.

04

Help fleet owners to know the drivers well



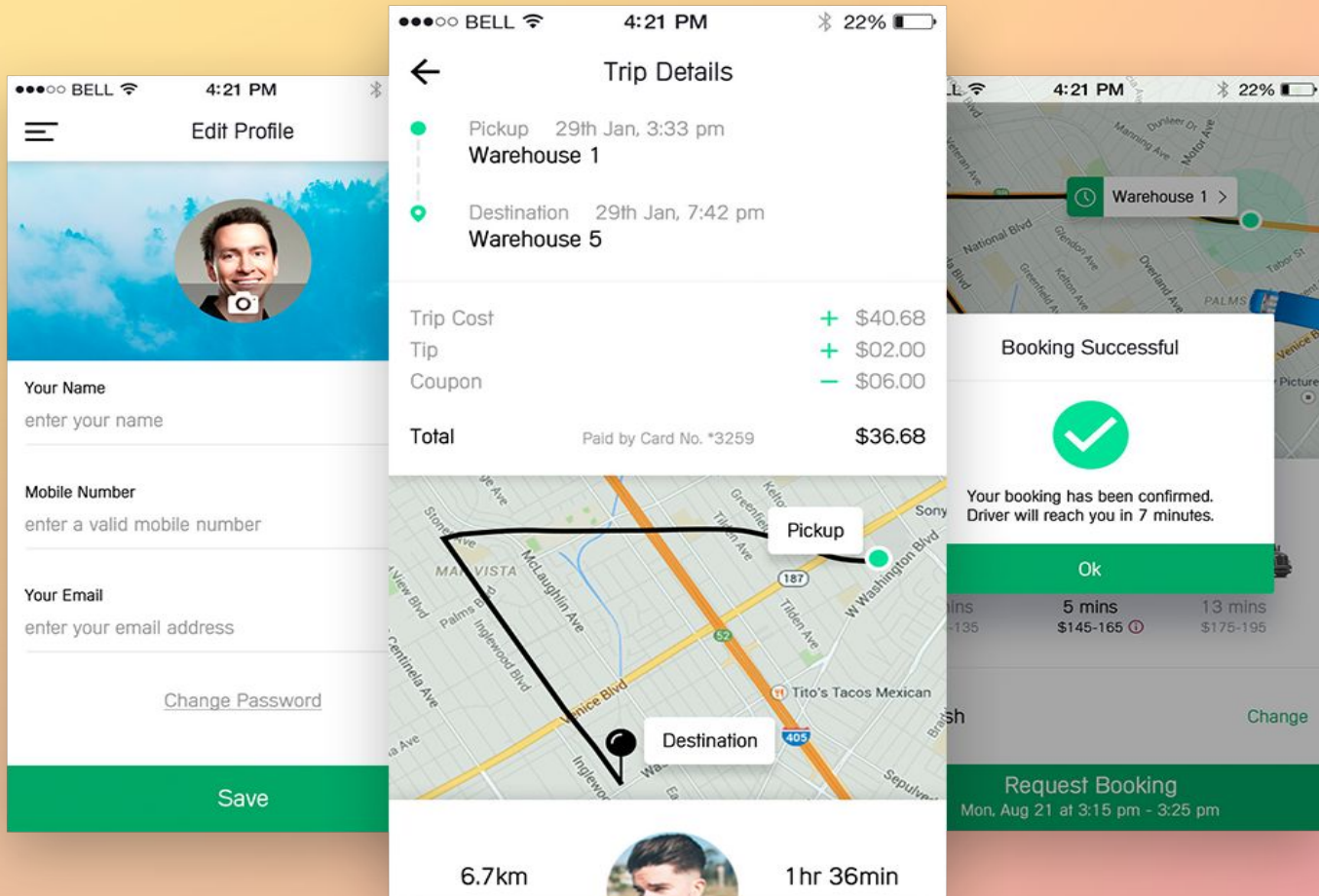
Eliminate Driver-related Issues With A Proper Fleet Management App

Many worries which generally haunts fleet owners are driving skills, loyalty, route knowledge and honesty of drivers. Let your app eliminate all these worries and allow fleet owners to take prompt decisions related to drivers.

Accurate location and route mapping feature will help in tracking and guiding the vehicle anytime from anywhere. The fuel indicator feature will keep on transmitting information related to fuel levels on real-time basis. The app can also record instances of over-speeding, long halts and improper braking.

Once a fleet owner can track this from his own location, he will get rid of unwanted worries and you can monetise here easily.

Fleet Business App Screens



05

**Provide the ease
of online receipt
and disbursal of
payments**



How payment modes are important?

There are various stages which needs to be crossed before any transaction. For example, in case of paying to drivers, a fleet owner or manager has to check the hours of work, leaves and absences. Then payment is done as per their norms.

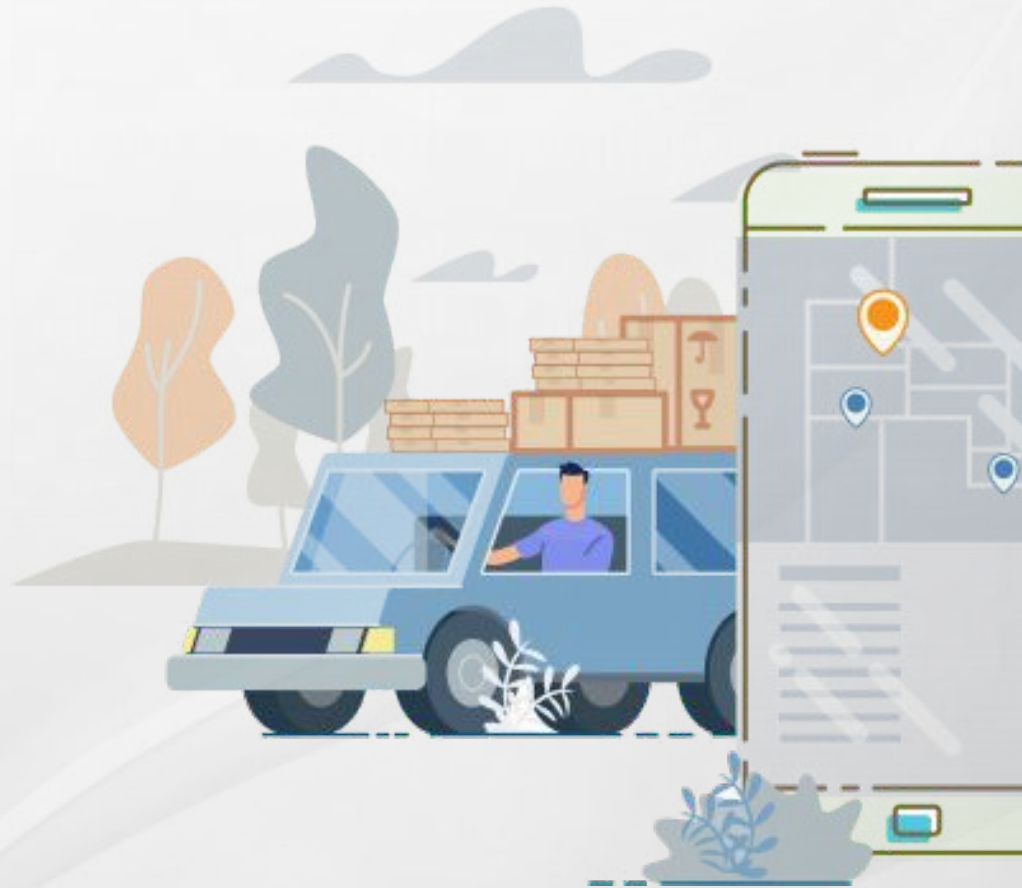
Make this process hassle-free from your app. Fleet Managers and Owners can easily monitor the performance of drivers and pay them likewise. The reports and information sharing feature will be helpful in this case with assistance of a secured payment engine.

That's all for the features that makes your app interactive and attractive. Let's go to the intricate **technological features that are mandatory for an app to run.**



06

Driver Mobile App Features

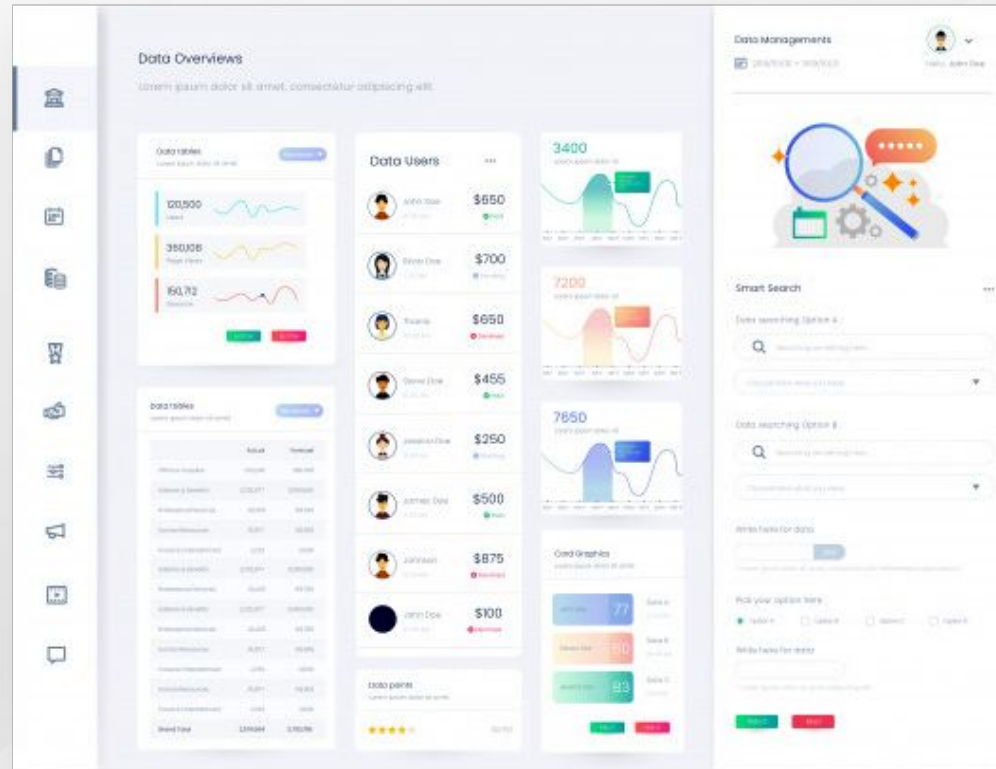


It is very important to monitor driver activities while a fleet is out. Apart from real-time GPS tracking and route maps, the driver's app will be having the following features:

- Online Training for Drivers
- Route and Fleet Data History
- Automated Alerts and Reporting
- Driver Management and Behavior Tracking
- Fuel Management
- Geofencing and Notifications
- Job Schedule and Leaderboards
- Cargo Optimisation

07

Management Admin Panel Features



It is very important that the Fleet Managers or Owners must be able to track their vehicles and monitor driver activities. To support all these purposes, the Management Admin Panel has the following features:

- Dashboard supported with Real-time analytics
- Vehicle Performance Monitoring & Management tools
- Smart Dispatch – Vehicle Dispatching & Scheduling
- Automatic Driver Assignment
- Route History & Service Availability
- Fuel Usage, Vehicle Tracking and Performance Analysis
- Revenue or Earning Statement Analysis
- Road Hazard Alert

Summary

- ✓ Validate your Fleet Management App IDEA.
- ✓ Focus on design, dashboard navigation & app architecture
- ✓ “Accurate Monitoring is the key”
- ✓ Clear format of report generation & information sharing
- ✓ Help fleet owners to know their Drivers well
- ✓ Provide the ease of online receipt and disbursal of payments
- ✓ Driver Mobile App Features
- ✓ Management Admin Panel Features



Digitize Your Fleet Management Business Today!

allrideapps.com



Want To Develop Fleet Management App?

If all the features, aspects and challenges of Fleet management systems must have inspired you to develop one of yours own, then let us provide you with a complete Fleet Management App Solution.

Get a 30 minute
FREE CONSULTATION

allrideapps.com



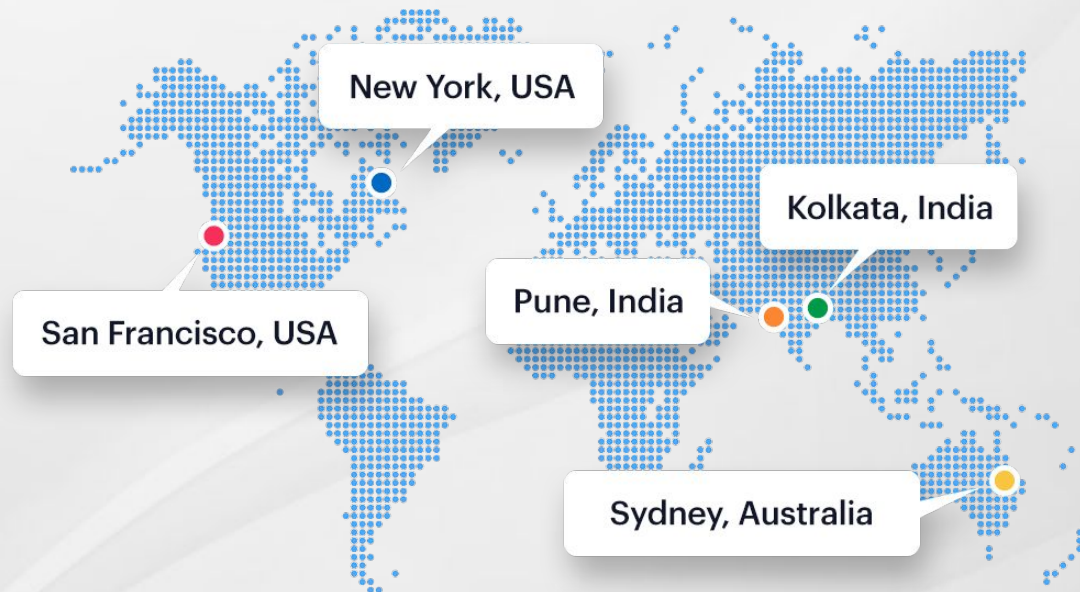
Inspired to own a Fleet Management App? Let AllRide Apps provide you the solution.



✉ business@allrideapps.com

www allrideapps.com

☎ +61 28 3114712 (AUS)
+1 866 941 5117 (US)
+44 744 867 9192 (UK)



allrideapps.com

